

**ANEXO**

**OBRAS SELECIONADAS**

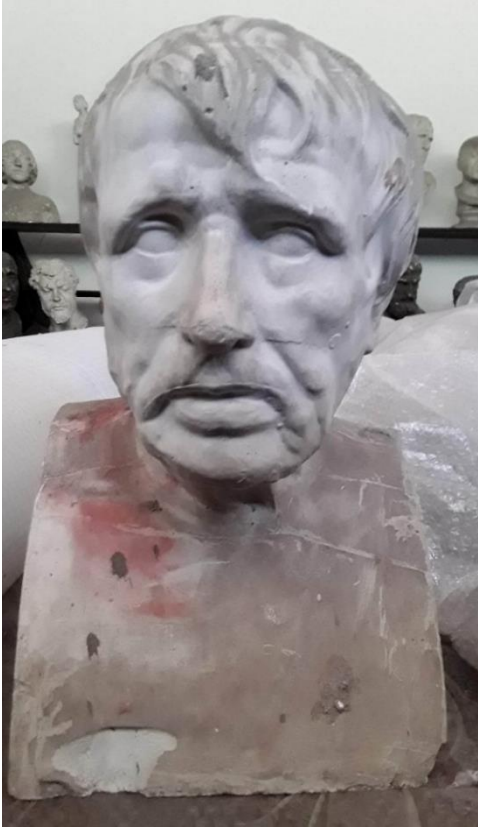
**MUSEU D. JOÃO VI - ESCOLA DA BELAS ARTES – UFRJ**

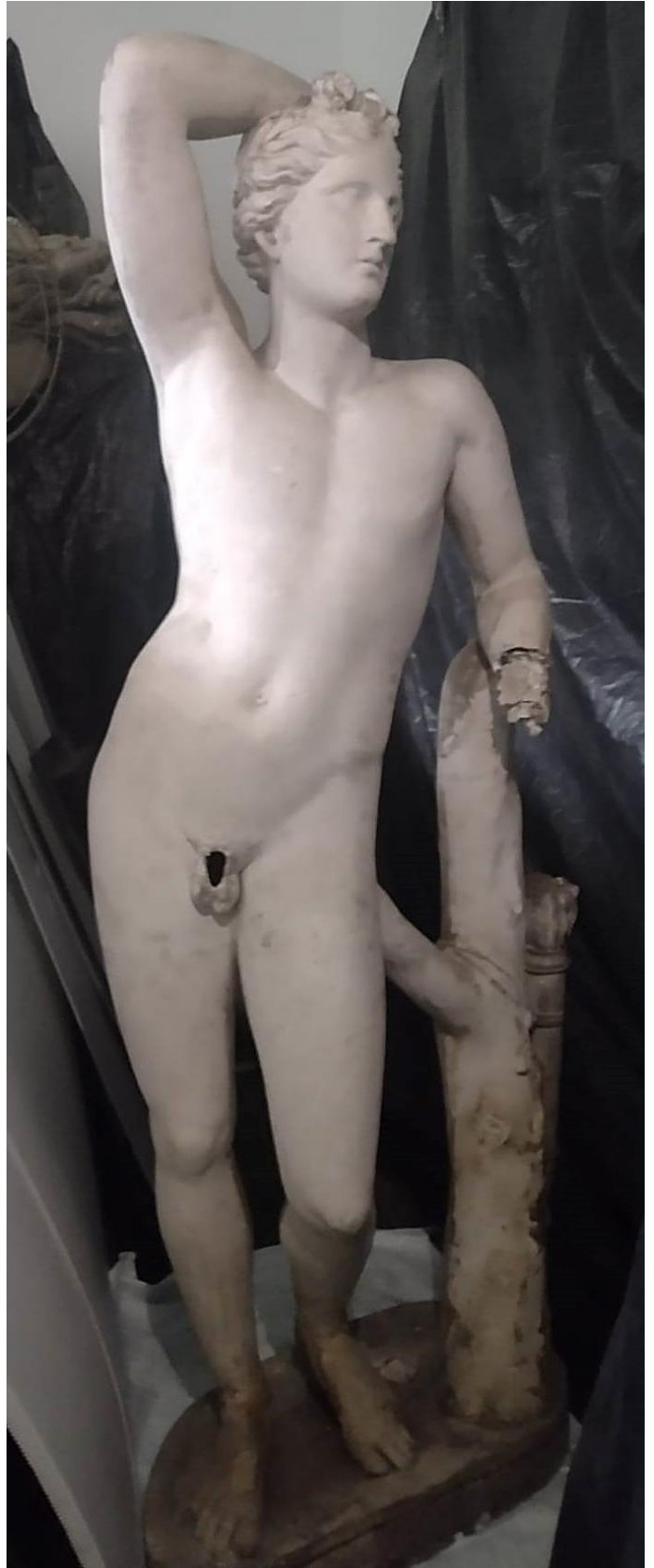
Moldagens em gesso (bens móveis e integrados)

Período clássico

















## OBRAS DO PERÍODO BARROCO









**NÚCLEO DE PESQUISA E DOCUMENTAÇÃO – FACULDADE DE ARQUITETURA**  
Réplicas em madeira com camada pictórica (bens integrados)

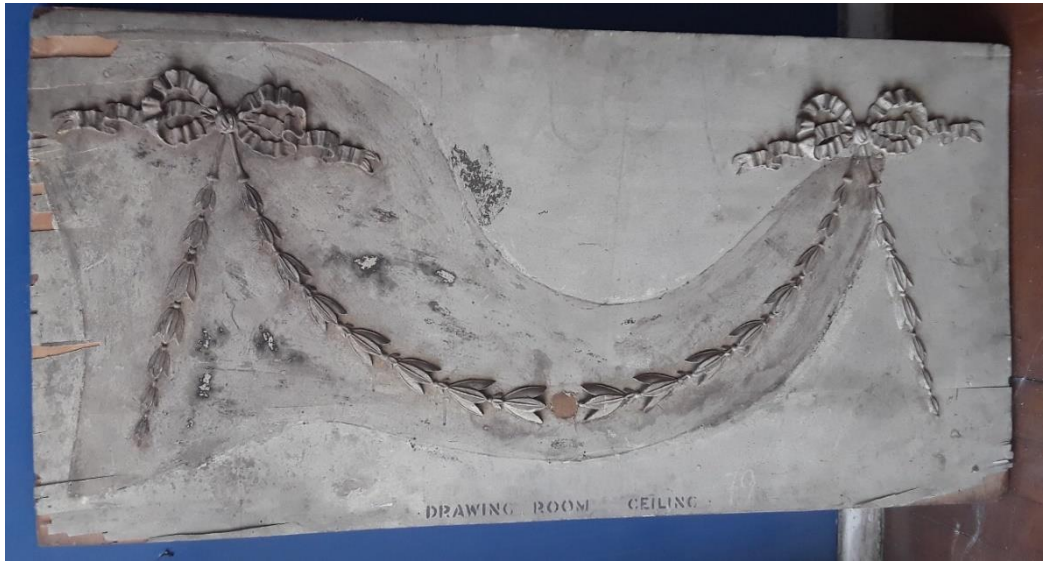


















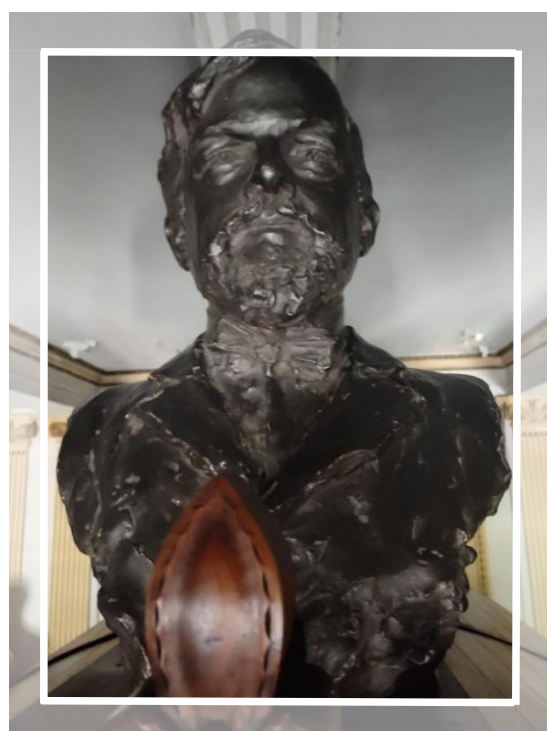
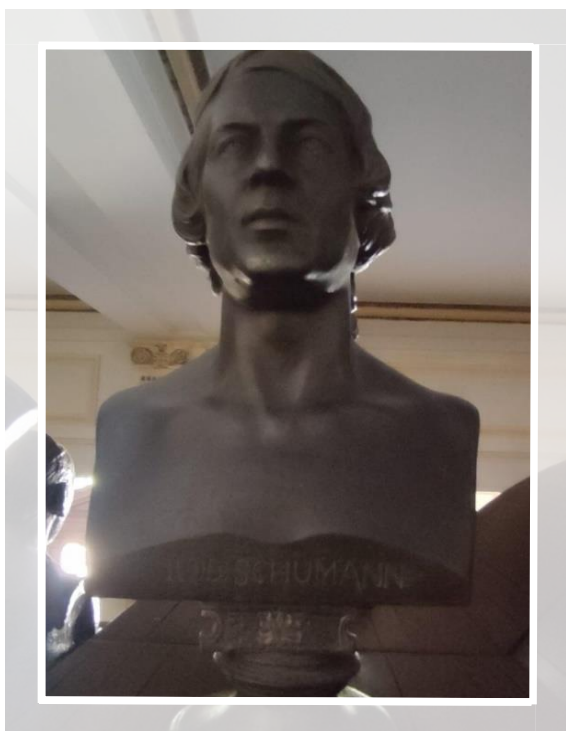
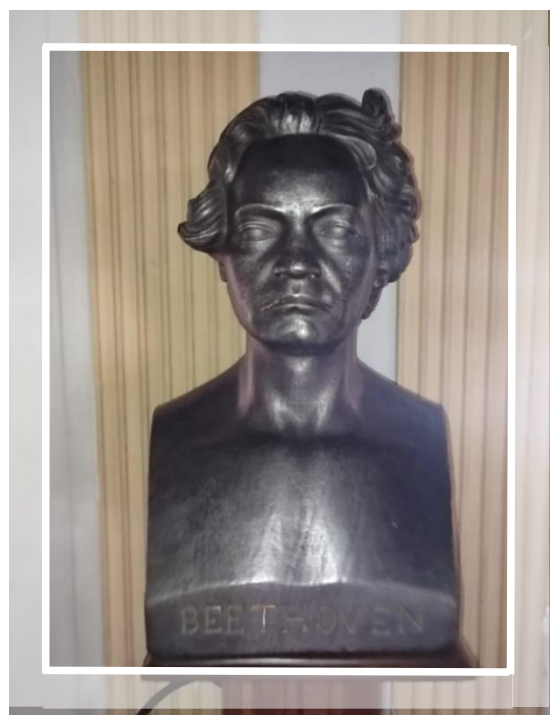
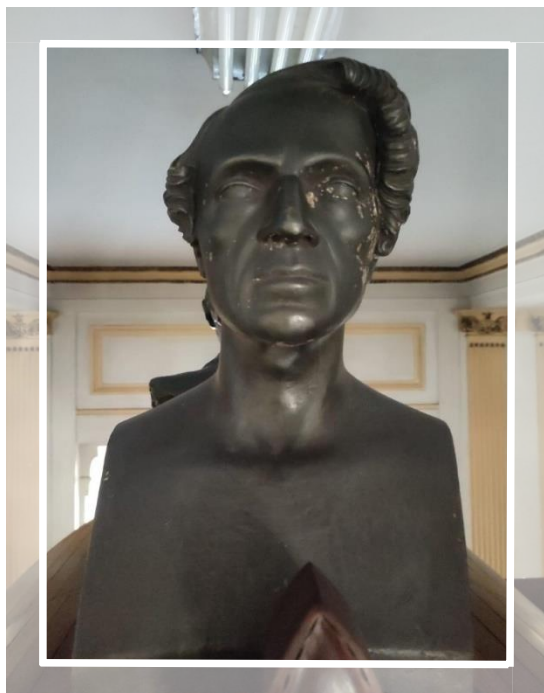


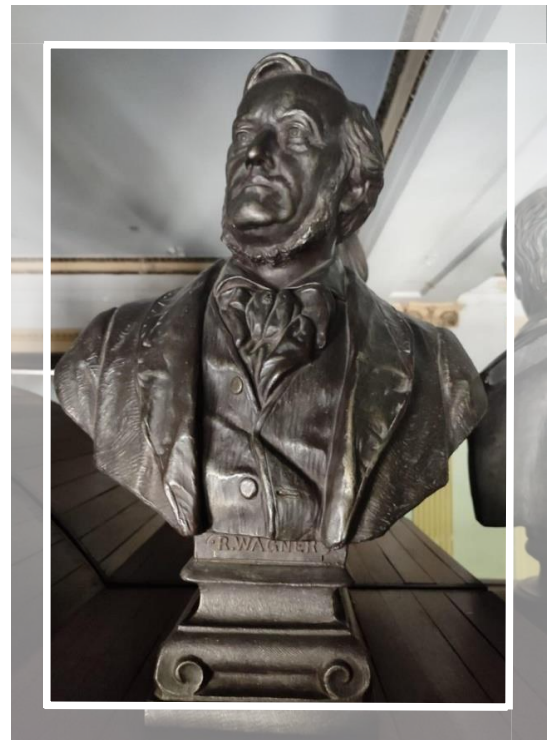
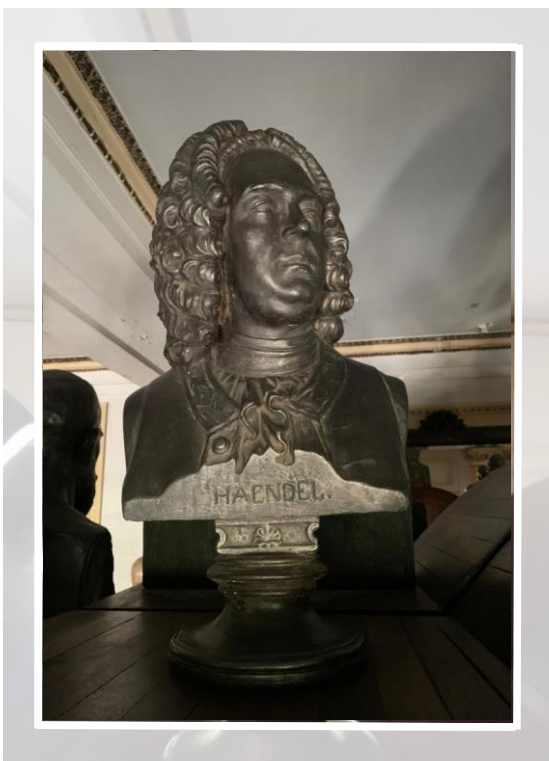
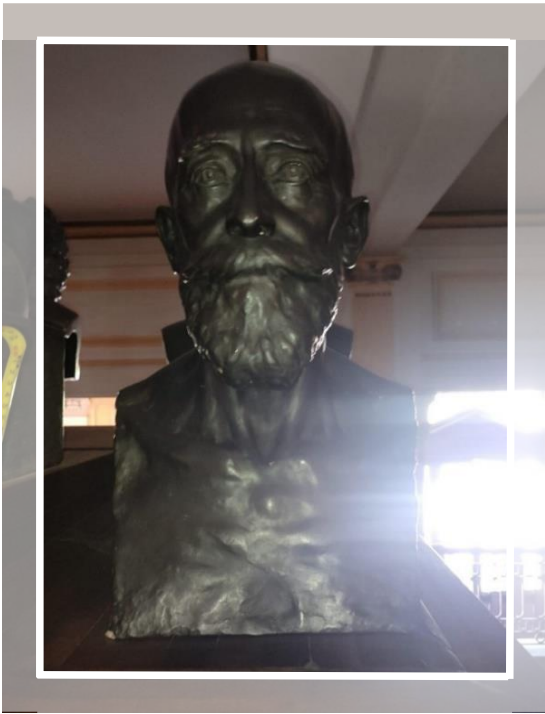


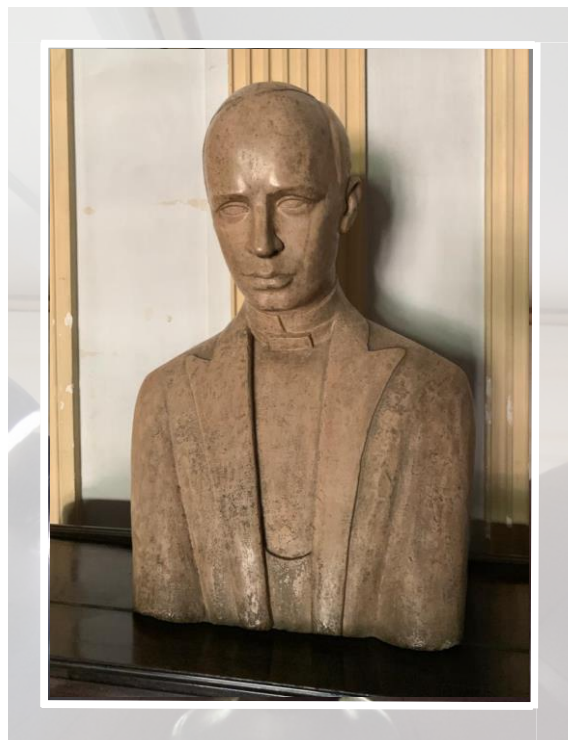
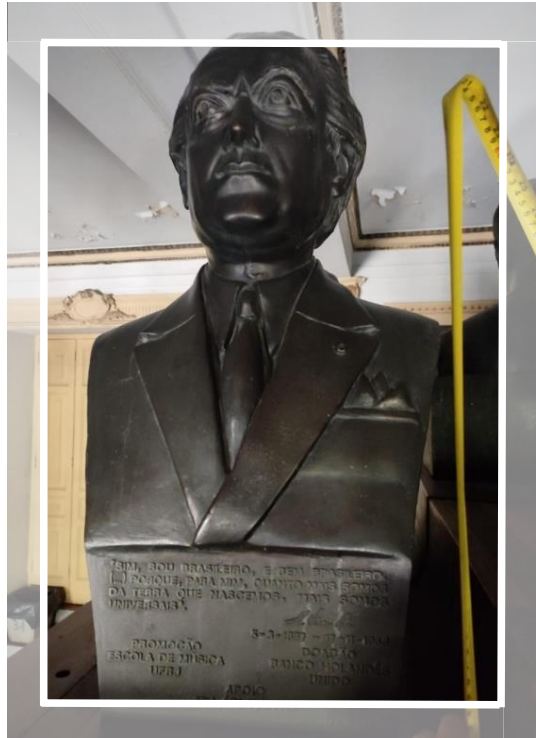
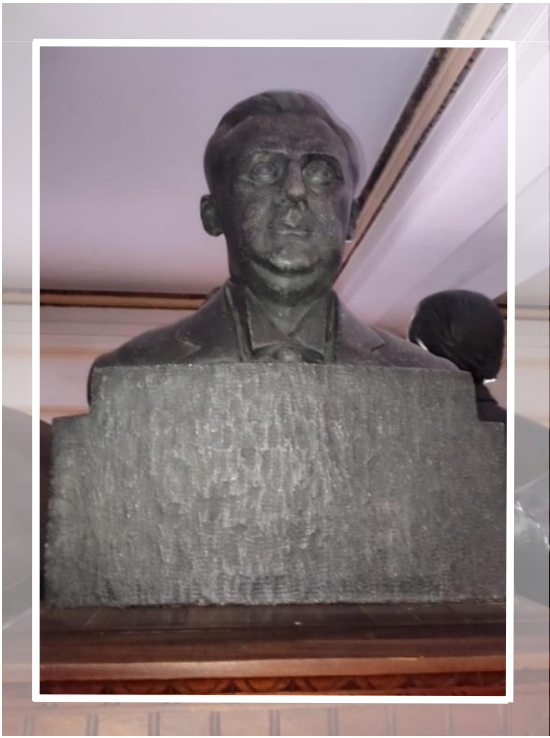


ESCOLA DA MÚSICA - UFRJ

BUSTOS







---

**COORDENADOR DO PROJETO**